



Effect of Different Altitudinal Zones on Growth Parameters of *Garcinia indica* (Choisy) in Uttara Kannada, Karnataka, India

Aravind, B. Rathod ^{a++}, Ramana, P. ^{a++*} and H. N. Karthik ^{a++}

^a Department of Forest Products and Utilization, College of Forestry, Sirsi- 581401 Uttara Kannada Dist., Karnataka, India.

Authors' contributions

This work was carried out in collaboration among all authors. All authors read and approved the final manuscript.

Article Information

DOI: <https://doi.org/10.9734/ijpss/2024/v36i105054>

Open Peer Review History:

This journal follows the Advanced Open Peer Review policy. Identity of the Reviewers, Editor(s) and additional Reviewers, peer review comments, different versions of the manuscript, comments of the editors, etc are available here: <https://www.sdiarticle5.com/review-history/121252>

Original Research Article

Received: 21/07/2024
Accepted: 23/09/2024
Published: 02/10/2024

ABSTRACT

This study examines the impact of altitudinal variation on the growth of *Garcinia indica* in Agro-climatic Zone-9 of Karnataka, specifically in the Uttara Kannada district of the Western Ghats. Eight experimental sites, categorized into four altitudinal zones (Plains, Up-ghat, Mid-ghat, and Coastal), were analyzed for tree height, girth, and crown diameter. Results show significant growth variations, with the Up-ghat zone having the highest mean tree height (10.73 m), the Coastal zone showing the largest girth (69.67 cm), and the Mid-ghat zone exhibiting the widest crown diameter (7.08 m). Four types of canopy found viz., Pyramidal, Full-crowned, Weeping and Spreading. These growth differences are influenced by environmental factors such as rainfall, humidity, and light availability,

⁺⁺ Professor and Head;

*Corresponding author: E-mail: ramanap@uasd.in;

Cite as: Rathod, Aravind, B., Ramana, P., and H. N. Karthik. 2024. "Effect of Different Altitudinal Zones on Growth Parameters of *Garcinia Indica* (Choisy) in Uttara Kannada, Karnataka, India". *International Journal of Plant & Soil Science* 36 (10):52-57. <https://doi.org/10.9734/ijpss/2024/v36i105054>.

which are more favourable in higher altitude regions. The findings have practical implications for commercial *Garcinia indica* cultivation, indicating plains and up-ghat as optimal for higher productivity. Understanding these growth patterns supports sustainable harvesting and improved yields for industries using kokum butter and extracts.

Keywords: *Garcinia indica*; tropical evergreen; high-quality drinks; dysentery.

1. INTRODUCTION

The genus *Garcinia*, which belongs to the Clusiaceae family, has about 200 species that are found throughout the world's tropics, mostly in Asia, Africa and Polynesia [1]. *Garcinia indica* is a tropical evergreen, slender tree with sloping branches, it reaches heights of 15 m. The mature kokum fruit is either dark purple or crimson with a yellow tint. It has 3-8 big seeds embedded in a red acid pulp in a regular pattern, similar to orange segments, in a white pulpy substance [2]. The tree is mostly found along the Konkan region of Maharashtra's Ratnagiri district, Goa, in Karnataka's district of Uttara Kannada, Udipi, Dakshina Kannada. It is known by various names across India including Murugalu in Kannada, Tallow tree in English and in Malayalam it is called Punarpuli [3].

The rind and seeds of the *Garcinia indica* fruit have a wide range of uses, including culinary, cuisine, fruit drinks, medicines and industrial. It's also known as an Indian spice with a nice flavour and a sweet acidic (sour) taste, making it a favourite culinary addition. In several Indian recipes, it is historically used as an acidulant. This tree is gaining popularity as its fruits have a wide range of applications, from pharmaceuticals to high-quality drinks. Dysentery, tumours, cardiac problems, stomach acidity and liver ailments have all been claimed to be treated with kokum. Garcinol, hydroxy citric acid and anthocyanin pigment are three significant chemical elements found in fruit rind. Garcinol is a fat-soluble yellow pigment that contains hydroxy citric acid, an acidulant and physiologically active chemical that has been demonstrated to help people lose weight [4].

Garcinia is an evergreen, tall growing tree found in the West coast of India, it flourishes well in coastal part at a height of 10 to 16 m, having girth of 50 to 100 cm with conical shaped greenish crown. The tree is grows will in high rain fall with medium altitude zones [5]. A full-grown *G. indica* tree attains a height of about 16 to 20 meters. The tree itself is ornamental with a dense canopy having lush green leaves with red tinged tender

emerging leaves. Being a pyramid shaped handsome evergreen tree, it is a good choice for growing along the roads and railway tracts [6]. *Garcinia* species are generally small or medium sized evergreen trees are distributed in pantropical regions, with high species richness in South-East Asia. *Garcinia indica* is evergreen to semi-evergreen tree up to 15 m height, exudation milky, branches with conical crown or pendulous drooping, the tree grows very good in ghat areas as compare to plain areas [7].

Garcinia indica is a slow-growing slender, tropical evergreen tree which grows to a height of 10–18 m naturally spread in Western Ghats and also in North-Eastern states [8].

Subash Chandran [9] reported on *Garcinia indica* having different canopy shapes viz., drooping and pyramidal shape with 10-15m height.

Garcinia indica canopies were basically either pyramidal or conical or of spreading [10].

Sobir et al., [11] identified variability in *Garcinia mangostana* with respect to morphological characters like tree shape, fruit shape and petal colour in several populations of Indonesia.

Parthsarathy and Nandakishore [12] studied on *Garcinia* genetic resources collection, which includes 15 species from the Western Ghats and the Eastern Himalaya. The morphological characterizations of the species in these two eco systems show that there is diversity within the same ecosystem and similarities between the species in these two ecosystems.

Garcinia indica variability studies on different *G. indica* species indicated significant differences among kola species with the most discriminative traits related to the plant size and fruit parameters such as fruit length, fruit thickness and fruit weight. *Garcinia kola* was the tallest species displaying the largest fruit thickness [13].

Garcinia species are generally small or medium sized evergreen trees, (occasionally shrubs: *G. buchneri* Engl.), and are distributed in pantropical

regions, with high species richness in South-East Asia. *Garcinia indica* is evergreen to semi-evergreen tree up to 15 m high, exudation milky, branches with conical crown or pendulous drooping. Branches with conical crown or pendulous drooping and berries smooth, not grooved, deep purple when ripe [7].

2. MATERIALS AND METHODS

The present study was conducted in the Agro-climatic Zone-9 of Karnataka, specifically in the Uttara Kannada district, part of the central Western Ghats, which is characterized by tropical climate conditions. The research focused on *Garcinia indica*, a species predominantly occurring in evergreen to semi-evergreen forests, naturally distributed across these locations and found on farmlands. Eight experimental sites were selected based on varying altitudes and rainfall patterns, categorized into four zones: Plains (Zone-A, 600 m MSL and above), up-ghat (Zone-B, 500-600 m MSL), mid-ghat (Zone-C, 400-500 m MSL) and coastal (Zone-D, 400 m MSL and below). In each zone, two sites were randomly chosen, and five trees per site were

selected for study. The sampling locations were distributed across Kumta taluk (Kathgal, Divage, Devimane, Ragihosalli) and Sirsi taluk (Janmane, Yeddalli, Islur, Banavasi). The region experiences a monsoonal climate, with rainfall ranging between 2000-4000 mm annually, predominantly during the southwest monsoon (June-September). The annual temperature ranges from 18°C to 31°C, with relative humidity peaking above 90% in July-August and dropping to as low as 40% in March-April.

2.1 Stand Enumeration and Various Instruments Used for Different Parameter

The Chaturvedi and Khanna (1982) technique of stand enumeration was used. Using a tape measure, the Girth at breast height (GBH) was measured at 1.37 meters above sea level and recorded in centimetres (cm). Using a Ravi altimeter, the tree's total height (measured in meters) from base to tip was determined. Two perpendicular directions were used to estimate the tree's crown spread. The crown diameter was determined by averaging the two results.

STUDY AREA

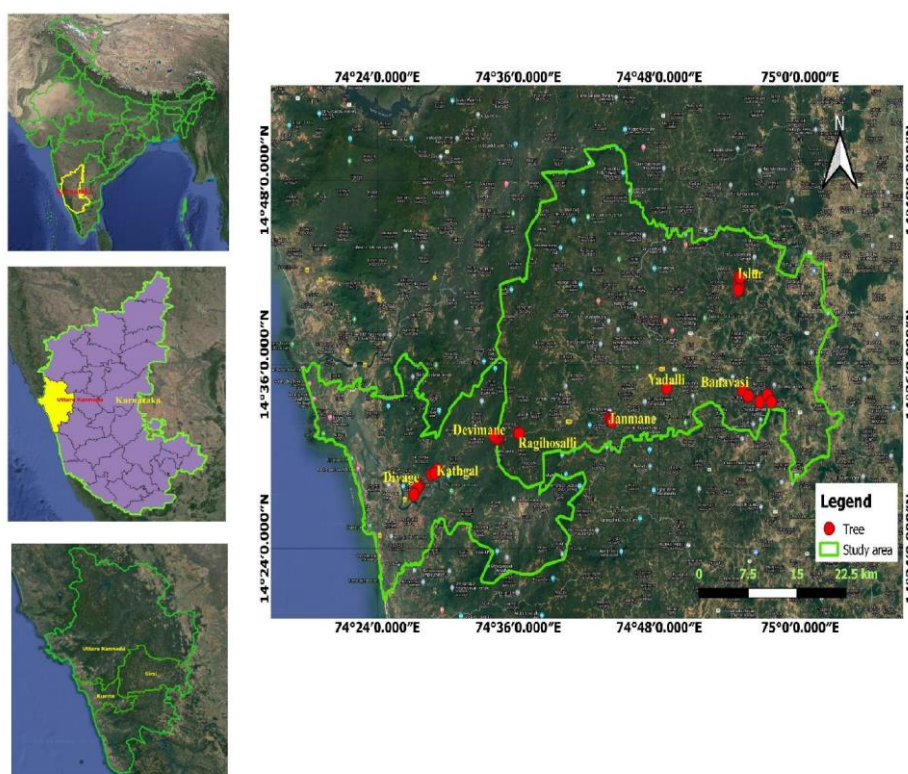


Fig. 1. Study area

Table 1. Geographical and climatic information of study area in Uttara Kannada district, Karnataka

Altitudinal Zone	Site (Location)	Altitude (m)	Mean annual rainfall (mm)	Annual rainy days	Mean annual temperature (°C)
Zone-A (Plains)	S ₁ (Banavasi)	603.6	2545 - 3456	97	30.5
	S ₂ (Islur)	670.4	2578 - 3269	97	30.9
Zone-B (Up-ghat)	S ₁ (Yeddalli)	550.3	2784 – 3568	110	28.9
	S ₂ (Janmane)	536.4	2756 – 3645	110	26.0
Zone-C (Mid-ghat)	S ₁ (Devimane)	431.6	2986 – 3865	100	27.0
	S ₂ (Ragihosalli)	436.3	3157 – 3945	100	25.0
Zone-D (Coastal)	S ₁ (Kathgal)	52.4	3800 – 4722	120	25.6
	S ₂ (Divage)	77.8	3800 - 4722	120	24.9

* Rainfall data by KSNDMC report 2019

3. RESULTS AND DISCUSSION

Table 2 represents influence of site conditions on tree height of *Garcinia indica* which reports that among the different zones, the highest mean tree height was observed in up-ghat (10.73 m), while lowest was observed in

mid-ghat and coastal (10.32 m). Whereas, maximum mean crown diameter was noticed in mid-ghat (7.08 m) and minimum was observed in plain (6.49 m) and highest girth at breast height was recorded in coastal (69.67 cm) and lowest was recorded in up-ghat (63.97 cm).

Table 2. Effect of altitudinal Zone and site variation on growth parameters

Altitudinal Zone	Site	Total tree height (m)	Girth at breast height (cm)	Crown diameter (m)
Zone-A (Plains)	S ₁ (Banavasi)	10.79	66.40	6.24
	S ₂ (Islur)	10.34	64.47	6.74
	Mean	10.57^b	65.43^c	6.49^c
Zone-B (Up-ghat)	S ₁ (Yeddalli)	9.41	61.60	6.18
	S ₂ (Janmane)	12.05	66.33	7.17
	Mean	10.73^a	63.97^d	6.67^b
Zone-C (Mid-ghat)	S ₁ (Devimane)	10.70	68.07	6.94
	S ₂ (Ragihosalli)	10.41	68.53	7.23
	Mean	10.56^b	68.30^b	7.08^a
Zone-D (Coastal)	S ₁ (Kathgal)	9.17	68.53	6.02
	S ₂ (Divage)	11.47	70.80	7.07
	Mean	10.32^c	69.67^a	6.54^b
SEm ±	Zone	0.031	0.260	0.071
	Site	0.035	0.290	0.080
	Interaction	0.070	0.518	0.160
CD @ 5%	Zone	0.088	0.731	0.204
	Site	0.099	0.818	0.228
	Interaction	0.198	1.635	0.456

*a indicated that significantly maximum value

b indicated that second highest value

c indicated that third highest value

d indicate that lowest value

Table 3. Tree shapes of *G. indica* in the study area

Crown shape	Trees	Share (%)
Pyramidal	29	72.5
Full-crowned	6	15
Weeping	3	7.5
Spreading	2	5
Total	40	100

Among the different experimental study sites of different zones, the highest tree height was observed in site Janmane (S2-12.05 m) of up-ghat and lowest was observed in site Kathgal (S1-9.17 m) of coastal as indicated in. The maximum tree girth was observed in site Divage (S2-70.80 cm) of Coastal and minimum was recorded in site Kathgal (S1-61.60 cm). The widest tree crown diameter recorded in site Ragihosalli (S2-7.23 m) of mid-ghat and shortest was observed in site Kathgal (S1-6.0 m) of Coastal.

Table 3 shows there are four different crown shape were recorded in experimental study area of Agro climatic zone 9. This shows that there is variation exist among the zones and sites. Where pyramidal crown shape shows dominant, (72.5 %) 29 trees followed by full-crowned trees (15 %) 6 trees, then weeping crown shape (7.5 %) 3 trees and distribution of trees under spreading shape of crown (5 %) 2 tree was found to be least.

Several climatic factors like moisture, rainfall, number of rainy days, temperature and wind etc. affect the vegetation. Among the climatic factors viz., altitude, rainfall and number of rainy days were most important. The present study, showed significant effect of altitudinal zones and sites on various growth parameters such as total or mean tree height, girth and crown diameter.

Higher growth is found in Plains and Up-ghat for growth parameters like total height, higher tree girth was found in mid-ghat and coastal. Highest mean crown diameter was found in mid-ghat and coastal. This may be due to moderate relative humidity, maximum rainfall and moderate light incident in the higher altitudinal region compared to lower altitudinal region. The location of the site had an effect on typical weather because of the latitude, elevation or proximity to weather modifying capabilities together with mountains or huge bodies of water and lush evergreen forests with rich organic nutrients in the soil, which helps in the better growth.

4. CONCLUSION

This study examines how site conditions affect the growth of *Garcinia indica* in Uttara Kannada, focusing on tree height, crown diameter, and girth. Significant differences were found: the Up-ghat zone had the tallest trees (10.73 m), the

Coastal zone had the largest girth (69.67 cm), and the Mid-ghat zone showed the widest crown diameter (7.08 m). The plains and Up-ghat regions are identified as optimal for cultivation, ensuring a reliable supply of high-quality fruits and seeds for industries like food and pharmaceuticals.

These findings enable businesses to enhance productivity by targeting specific growth zones, aligning harvesting with optimal conditions, and reducing resource overexploitation. Additionally, the growth variations offer opportunities for breeding programs to develop superior strains and support region-specific branding, allowing companies to market products from high-quality zones at premium prices.

DISCLAIMER (ARTIFICIAL INTELLIGENCE)

Author(s) hereby declare that NO generative AI technologies such as Large Language Models (ChatGPT, COPILOT, etc) and text-to-image generators have been used during writing or editing of this manuscript.

COMPETING INTERESTS

Authors have declared that no competing interests exist.

REFERENCES

1. Roberts E. Vegetable materia medica of India and Ceylon. Bishen Singh Mahendra Pal Singh, Dehra Dun, India; 1984.
2. Krishnamurthy N. Chemical and technological studies on colouring matters from natural sources for use in foods. Ph.D. Thesis, Mysore, Uni; 1984.
3. Swami SB, Thakor NJ, Patil SC. Kokum (*Garcinia indica*) and its many functional components as related to the human health: A review. J. food res. Tech. 2014; 2(4):130-142.
4. Krishnamurthy N, Lewis YS, Ravindranatha B. Chemical constitution of Kokum fruit rind. J. Food Sci. Tech. 1982; 19:97-100.
5. Rema J, Krishnamurthy B. *Garcinia* species of economic importance, distribution and uses. Ind. Spices. 2000; 37(1):20-23.

6. Bridgwater AV. Review of fast pyrolysis of biomass and product upgrading. Biomass, Bioenergy. 2012;38: 68-94.
7. Shameer PS, Rameshkumar KB, Mohanan N. Diversity of *Garcinia* species in the Western Ghats. Diversity of *Garcinia* species in the Western Ghats: Phytochemical Perspective. Jawaharlal Nehru Tropical Botanic Garden and Research Institute Palode, Akshara Offset Press Thiruvananthapuram, India. 2016; 01-18.
8. Singh NP. Clusiaceae. In: Flora of India. Ed: Sharma B.D., Sanjappa M. and Balakrishnan N. P., Botanical Survey of India, Calcutta. 1993;3:86-151.
9. Subash Chandran MD. The Kokum tree. Reson. J. Sci. Edu. 1996;26(1):86-89.
10. Priyadevi S, Thangam M, Ramchandrudu K, Ashok kumar J, Singh NP. Genetic diversity of Kokum (*Garcinia indica*) in Goa-tree and fruit characters. Tech. Bull. No.33, ICAR (RC) Goa; 2013.
11. Sobir S, Poerwanto R., Santosa E, Sinaga S, Mansyah E. Genetic variability of mangosteen, an apomictic *Garcinia*. Acta. Horti. 2013;975:155-164.
12. Parthasarathy U, Nandakishore OP. A study on nutrient and medicinal compositions of selected Indian *Garcinia* species. Curr. Bioact. Compd. 2014;10:55-61.
13. Durand DN, Hubert AS, Diarrassouba N, Adolphe A, Pacome AN, Haziz S, Bello OD, Lamine BM. Morpho-agronomic variability of three kola trees accessions [*Cola nitida* (Vent.) Schott et Endl., *Cola acuminata* (P. Beauv.) Schott et Endl. and *Garcinia kola* Heckel] from Southern Benin. Genet. Resour. Crop Evolu. 2016; 63(3):561–579.

Disclaimer/Publisher's Note: The statements, opinions and data contained in all publications are solely those of the individual author(s) and contributor(s) and not of the publisher and/or the editor(s). This publisher and/or the editor(s) disclaim responsibility for any injury to people or property resulting from any ideas, methods, instructions or products referred to in the content.

© Copyright (2024): Author(s). The licensee is the journal publisher. This is an Open Access article distributed under the terms of the Creative Commons Attribution License (<http://creativecommons.org/licenses/by/4.0>), which permits unrestricted use, distribution, and reproduction in any medium, provided the original work is properly cited.

Peer-review history:

The peer review history for this paper can be accessed here:
<https://www.sdiarticle5.com/review-history/121252>