



Analysis of Hemoglobin Levels among Oral Cancer Patients: An Institutional Study

Karishma Desai ^a, Pratibha Ramani ^{b*} and Deepak Pandiar ^b

^a Saveetha Dental College and Hospitals, Saveetha Institute of Medical and Technical Sciences [SIMATS], Saveetha University, Chennai-600077, Tamil Nadu, India.

^b Department of Oral Pathology, Saveetha Dental College and Hospitals, Saveetha Institute of Medical and Technical Sciences [SIMATS], Saveetha University, Chennai-600077, India.

Authors' contributions

This work was carried out in collaboration among all authors. All authors read and approved the final manuscript.

Article Information

DOI: 10.9734/JPRI/2021/v33i63B35839

Open Peer Review History:

This journal follows the Advanced Open Peer Review policy. Identity of the Reviewers, Editor(s) and additional Reviewers, peer review comments, different versions of the manuscript, comments of the editors, etc are available here: <https://www.sdiarticle5.com/review-history/81801>

Original Research Article

Received 22 October 2021
Accepted 26 December 2021
Published 29 December 2021

ABSTRACT

Background: Oral squamous cell carcinoma (OSCC) is one of the most common types of cancer worldwide. It is estimated that approximately half of all the tumors affecting the head and neck region commonly affect the oral cavity. Premalignant lesions can manifest as leukoplakia, erythroplakia, keratosis or even oral candidiasis. Hemoglobin (Hb) is a protein contained in the red blood cells of the body and plays an important role in delivery of oxygen to the tissues. A sufficient level of Hemoglobin is required to maintain oxygenation of the tissues. Anemia is defined as a reduction in hemoglobin levels below the lower limit pertaining to a particular age group. Treating anemia by increasing the levels of hemoglobin has proven to increase the quality of life of cancer patients. The aim of the present study is to analyze the Hb level in OSCC patients attending our institution.

Materials and Methods: The present retrospective institutional study was conducted after obtaining ethical clearance from the Institutional Ethical Approval Board to access patient records and data. A total of 5, 00,000 case sheets were analyzed from June 2019 to February 2021. Suitable inclusion and exclusion criteria were applied and case sheets were shortlisted. The data were entered in MS Excel spreadsheet and further statistical analysis was carried out using SPSS. All results were displayed as graphs and pie charts.

Results: 64 cases of OSCC were included in the present study with a male predominance. 45% of the study population had a level between 9-11 mg/dl. 60.3% of the population belonged to the age group of 50 and above.

*Corresponding author: E-mail: hod.omfpsaveetha@gmail.com;

Conclusion: Anemia in cancer can be precipitated due to various factors. It can be caused or exacerbated by the cancer itself due to immunosuppression or due to chemotherapy. Anemia can also be pre existing due to underlying conditions. It was found that hemoglobin levels are found to be higher in males and higher in ages 50+ when compared to ages 30-40. Low levels of hemoglobin and anemic conditions in oral cancer patients can cause excessive fatigue and can significantly affect quality of life and hence, hemoglobin therapy is widely administered to oral cancer patients.

Keywords: Anemia; hemoglobin; oral cancer; squamous cell carcinoma; quality of life; novel analysis; innovation.

1. INTRODUCTION

Oral Squamous Cell Carcinoma, is one of the most common types of cancer worldwide. It is estimated that approximately half of all the tumours affecting the head and neck region commonly affect the oral cavity [1]. OSCC is an important health issue with a wide spectrum of etiologies [2]. Common factors predisposing to oral cancer include tobacco use, smoking, betel quid chewing, use of alcohol, viral or fungal infections and there are various causes that cannot be determined. Smokers are more prone to developing these cancers when compared to non-smokers [3]. Premalignant lesions can manifest as leukoplakia, erythroplakia, keratosis or even oral candidiasis. Most common presenting features of oral cancers are painless ulcers, white patches, painful lumps with irregular margins, inability to open the mouth normally [4,5].

Hemoglobin (Hb) is the protein that is contained within the red blood cells of the body. Hemoglobin plays an important role in delivery of oxygen to the tissues. A sufficient level of Hemoglobin is required to maintain oxygenation of the tissues [6]. Hemoglobin is considered to be one of the most intriguing topics to study about given its complex roles and essential functions in the human body [7]. Emphasising more on its structure, Iron atoms of the hemoglobin combine with protoporphyrin to form haem groups which help in oxygen transport [8-10] Our team has extensive knowledge and research experience that has translated into high quality publications [11-30].

Anemia is a very common finding in cancer patients. Hemoglobin levels in oral cancer can relate to the quality of life of the patient [31,32]. Anemia is defined as a reduction in hemoglobin levels below the lower limit pertaining to a particular age group. Anemia of chronic disease refers to anemia that occurs alongside chronic

infections and inflammations despite of adequate body iron stores. Anemia is seen in chronic dental diseases such as Periodontitis [33]. Anemia can also be inherited such as in Fanconi's anemia and can progressively lead to carcinoma [34]. Presence of anemia elicits a poor prognostic factor, and may also cause a negative effect on quality of life of the patient due to cancer induced fatigue [35,36]. In patients undergoing chemotherapy treatment, the chances of inducing anemia is higher than 90% [37]. Treating the anemia, by increasing the levels of hemoglobin has proven to increase quality of life of the cancer patients [38]. The aim of this study was to analyse the hemoglobin levels among oral cancer patients.

2. MATERIALS AND METHODS

This study is a retrospective study conducted in a university setting. A total of 5,00,000 case sheets were analysed from June 2019 to February 2021. Suitable inclusion and exclusion criteria were applied and case sheets were shortlisted. All oral cancer patients and Hemoglobin levels were included. Incomplete records and insufficient data were excluded from the study. Since this study is conducted within a university setting, it has a low external validity and a high internal validity. All data was tabulated using MS Excel. This data was then exported to IBM SPSS Software Version 23 (Chicago) for final statistical analysis. Descriptive statistics and Chi-square testing was done to draw a comparison between the hemoglobin levels. All the data obtained after analysis was represented in the form of graphs and pie charts.

3. RESULTS AND DISCUSSION

In total 64 OSCC cases were included in the present study out of which 81.2% were males (n=52) and remaining 12 were females with a definitive male preponderance (M:F::4.3:1). All the results obtained were presented as pie charts

and bar graphs. In Fig. 1, Hemoglobin levels of the oral cancer patients are depicted. 45% of the population had a level between 9-11 mg/dl. About 60.3% of the population belonged to the age group of 50 and above.

Anemia is a very common finding in cancer patients and is a frequent complication of chemotherapy. The intense immunosuppressive treatment in cancer therapy leads to a drop in hemoglobin levels in general. Anemia can be taken up as one of the many adverse prognostic factors in cancer patients.

We found a definitive male predilection which is similar to previous studies [39]. It was found that the maximum number of cases were aged 50 years and above and the majority (45%) had a Hb value between 9-11 mg/dl. In contrast to previous studies, a male predominance was

seen [40]. Mean Hb levels in males with OSCC have been found to be 11.25 ± 1.63 , which was comparatively higher than Hb values in females (10.77 ± 1.71).

A study done by Osterborg A et al, [41] showed a direct correlation between quality of life and level of Hemoglobin. It showed that as Hemoglobin levels increased during chemotherapy, quality of life was improved. Transfusion of packed RBCs aims to increase the level of hemoglobin and is commonly used along with cancer therapy so as to avoid anemic conditions leading to fatigue and other complications [31]. Low hemoglobin levels are associated with poorer overall quality of life, greater fatigue and other complications. Some interventions that can be done to reverse fatigue and other anemia interlinked symptoms should be employed so as to have a positive effect on the quality of life of the patient [42,43].

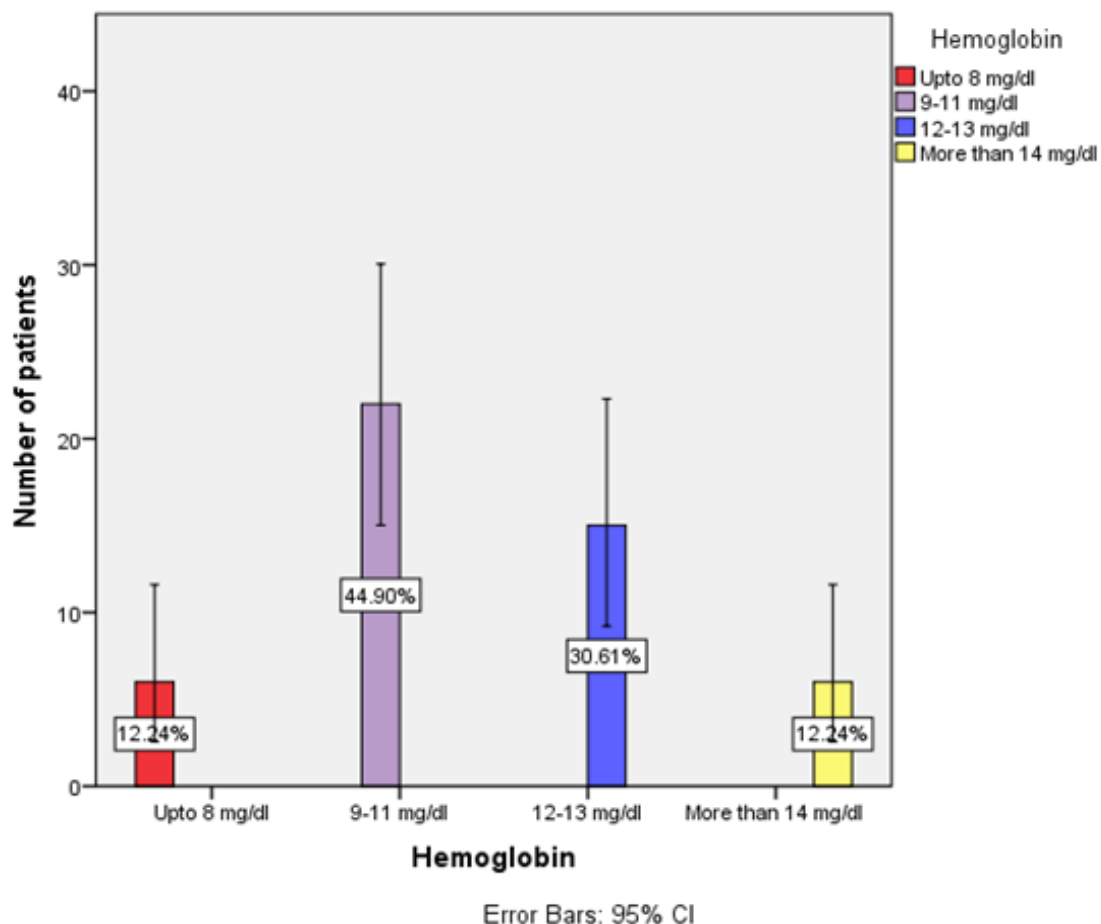


Fig. 1. shows a bar chart depicting the Hemoglobin levels of the oral cancer patients. 12.24% of patients had a Hb level upto 8 mg/dl (red), 44.9% had a level of 9-11 mg/dl (purple), 30.61% had Hb levels between 12-13 mg/dl (blue) and 12.24% had a Hb level higher than 14 mg/dl (yellow)

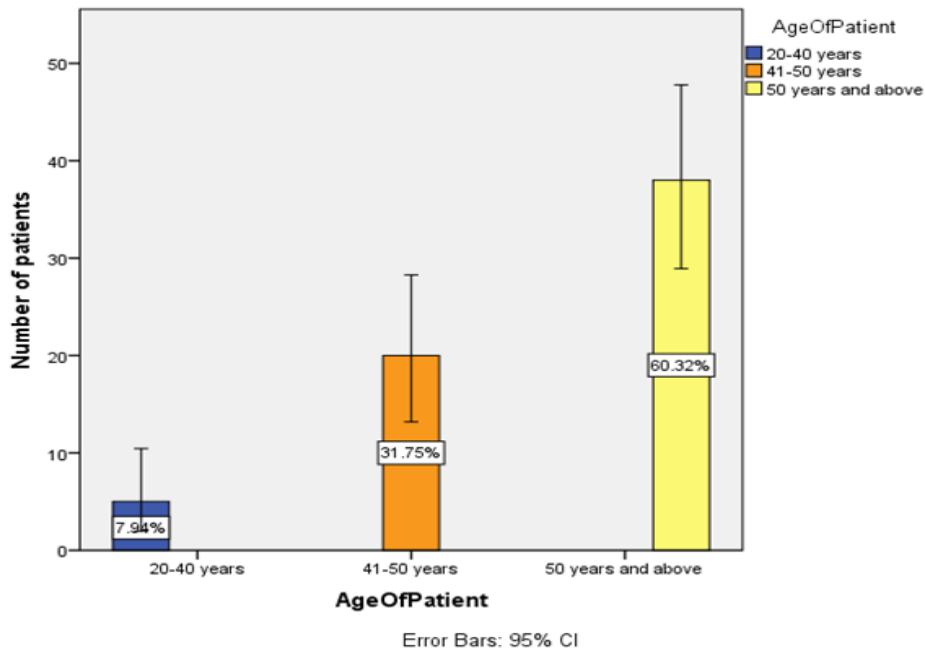


Fig. 2 shows a bar chart depicting the age of the oral cancer patients. 7.94% of the population belonged to the age group between 20 to 40 years, 31.75% of the population were between the ages of 41 to 50. A majority of the population (60.32%) belonged to the age group of more than 50 years

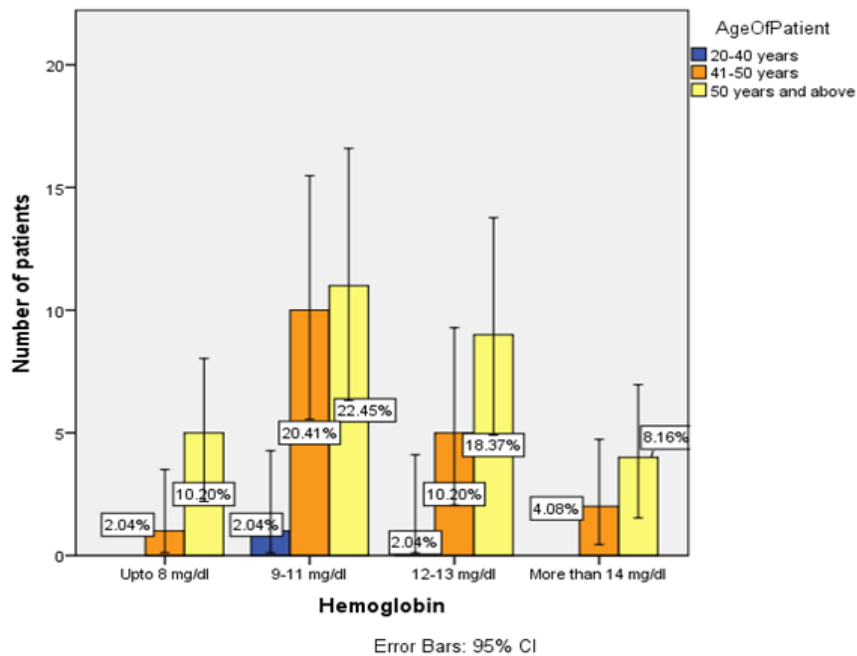


Fig. 3. Shows a bar graph depicting a comparison between age of the patient and their hemoglobin levels and number of patients. X axis represents Hemoglobin level of the patient and Y axis represents number of the patients. It can be seen that across the age groups, 20-22 % of the population had Hb levels between 9-11 mg/dl. Pearson’s Chi-Square testing was done and the value was found to be 2.889 and P value was found to be 0.823 hence, not significant. Orange represents patients aged between 41-50 years. Blue represents patients amongst the age group of 20 to 40 years and Yellow represents the patients more than 50 years of age

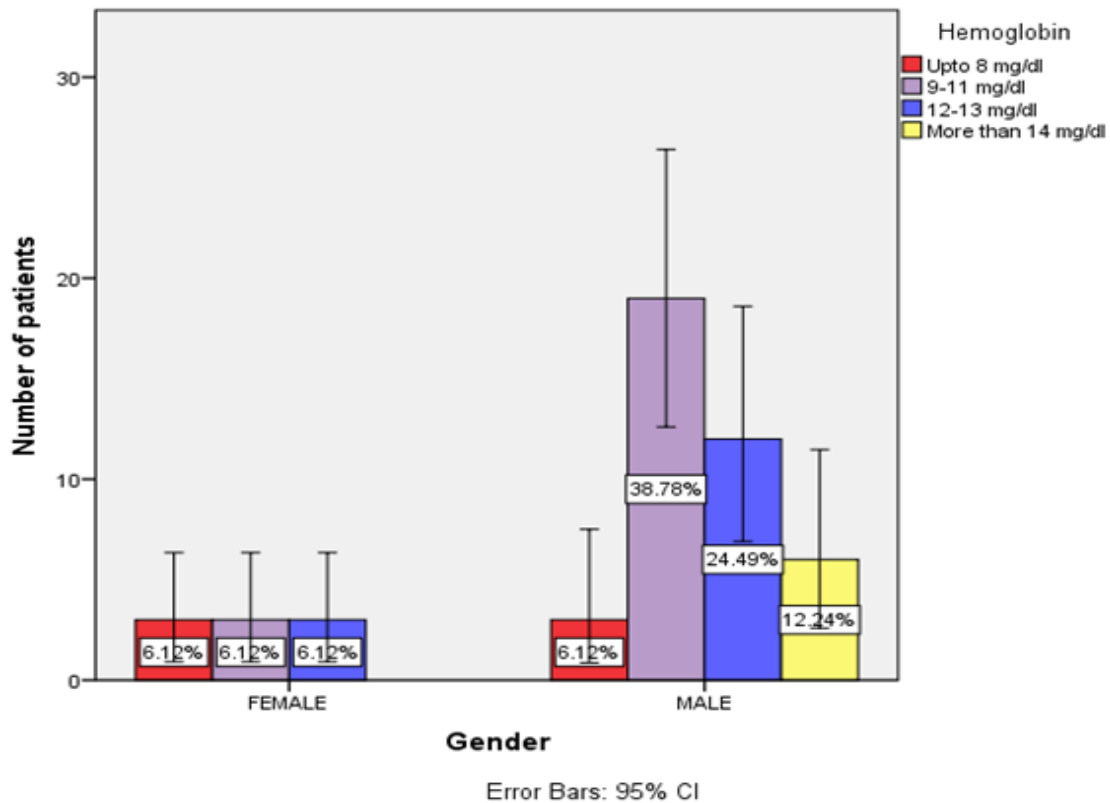


Fig. 4. Shows bar graphs representing a comparison between gender of the patient and their hemoglobin levels. The X axis represents Gender and the Y axis represents the number of the patients. This graph reveals that among females, none had Hb levels more than 14 mg/dl, while 12.24% of males had Hb levels more than 14 mg/dl. Pearson Chi-Square testing was done and the value was found to be 5.709, P value was 0.127, hence considered not significant. Red represents Hb level upto 8 mg/dl, Purple represents Hb levels between 9-11 mg/dl, Blue represents Hb levels between 12-13 mg/dl and Yellow represents Hb levels more than 14 mg/dl

There are however some inherent limitations of the study. The results of this study cannot be generalised to the whole population as many patients may be lost to other hospitals and private practitioners. However, it does provide a baseline data for further studies. Also other parameters such as MCV, MCHC could not be included in this study.

4. CONCLUSION

Anemia in cancer can be precipitated due to various factors. It can be caused or exacerbated by the cancer itself due to immunosuppression or due to chemotherapy. Anemia can also be pre existing due to underlying conditions. Anemia can be considered as an adverse prognostic factor in such patients. A low level of Hemoglobin can directly impair the quality of life of the patient. In this study, an association was drawn between the hemoglobin levels and the cancer patient within the University. From the graphs

obtained, it can be concluded that hemoglobin levels are found to be higher in males and higher in ages 50+ when compared to ages 30-40. Low levels of hemoglobin and anemic conditions in oral cancer patients can cause excessive fatigue and can significantly affect quality of life and hence, hemoglobin therapy is widely administered to oral cancer patients.

DISCLAIMER

The products used for this research are commonly and predominantly products in our area of research and country. There is absolutely no conflict of interest between the authors and producers of the products because we do not intend to use these products as an avenue for any litigation but for the advancement of knowledge. Also, the research was not funded by the producing company rather it was funded by the personal efforts of the authors.

CONSENT

It is not applicable.

ETHICAL APPROVAL

An ethical approval was obtained from the Institutional Ethical Approval Board to access patient records and data.

ACKNOWLEDGMENTS

The authors are thankful to Saveetha Dental College for providing a platform to express our knowledge.

COMPETING INTERESTS

Authors have declared that no competing interests exist.

REFERENCES

1. Kademani D. Oral Cancer. *Mayo Clin Proc.* 2007;82(7):878–87.
2. Sciubba J. Oral Cancer The Importance of Early Diagnosis and Treatment. *Am J Clin Dermatol.* 2012;2:239–51.
3. Brad Neville TD. Oral Cancer and Precancerous Lesions. *CA Cancer J Clin.* 2002;52(4):195–215.
4. Oral cancer: Clinical features. *Oral Oncol.* 2010;46(6):414–7.
5. Shah JP, Johnson NW, Batsakis JG, Batsakis JG. *Oral Cancer.* Thieme. 2003; 496.
6. Hemoglobin and Hematocrit [Internet]. *Anesthesiology.* 1967; 28:763–763. Available:<http://dx.doi.org/10.1097/00000542-196707000-00028>
7. Perutz MF. Hemoglobin Structure and Respiratory Transport [Internet]. *Scientific American.* 1978;239:92–125. Available:<http://dx.doi.org/10.1038/scientificamerican1278-92>
8. Muirhead H. The Structure of Haemoglobin [Internet]. *Naturstoffe.* 1996;41–64. Available: http://dx.doi.org/10.1007/978-3-662-25280-2_2
9. Perutz MF, Rossman MG, Georg Will. Structure of Haemoglobin; 1960. Available:http://www.gradadm.ifsc.usp.br/dados/20102/FFI0776-1/Perutz_1960.pdf
10. Ranney HM, Shaklai N, Yguerabide J. Hemoglobin and the red cell membrane [Internet]. *Biochemical and Clinical Aspects of Hemoglobin Abnormalities.* 1978;509–13. Available: <http://dx.doi.org/10.1016/b978-0-12-164350-8.50041-8>
11. Princeton B, Santhakumar P, Prathap L. Awareness on Preventive Measures taken by Health Care Professionals Attending COVID-19 Patients among Dental Students. *Eur J Dent.* 2020;14(S 01):S105–9.
12. Mathew MG, Samuel SR, Soni AJ, Roopa KB. Evaluation of adhesion of *Streptococcus mutans*, plaque accumulation on zirconia and stainless steel crowns, and surrounding gingival inflammation in primary molars: Randomized controlled trial. *Clin Oral Investig.* 2020;24(9):3275–80.
13. Sridharan G, Ramani P, Patankar S, Vijayaraghavan R. Evaluation of salivary metabolomics in oral leukoplakia and oral squamous cell carcinoma. *J Oral Pathol Med.* 2019;48(4):299–306.
14. R H, Hannah R, Ramani P, Ramanathan A, Jancy MR, Gheena S, et al. CYP2 C9 polymorphism among patients with oral squamous cell carcinoma and its role in altering the metabolism of benzo[a]pyrene [Internet]. *Oral Surgery, Oral Medicine, Oral Pathology and Oral Radiology.* 2020; 130:306–12. Available:<http://dx.doi.org/10.1016/j.oooo.2020.06.021>
15. Antony JVM, Ramani P, Ramasubramanian A, Sukumaran G. Particle size penetration rate and effects of smoke and smokeless tobacco products - An *In vitro* analysis. *Heliyon.* 2021;7 (3):e06455.
16. Sarode SC, Gondivkar S, Sarode GS, Gadbail A, Yuwanati M. Hybrid oral potentially malignant disorder: A neglected fact in oral submucous fibrosis. *Oral Oncol.* 2021;105390.
17. Hannah R, Ramani P, WM Tilakaratne, Sukumaran G, Ramasubramanian A, Krishnan RP. Author response for “Critical appraisal of different triggering pathways for the pathobiology of pemphigus vulgaris—A review” [Internet]. Wiley; 2021. Available:<https://publons.com/publon/47643844>
18. Chandrasekar R, Chandrasekhar S, Sundari KKS, Ravi P. Development and validation of a formula for objective assessment of cervical vertebral bone age. *Prog Orthod.* 2020;21(1):38.

19. Subramanyam D, Gurunathan D, Gaayathri R, Vishnu Priya V. Comparative evaluation of salivary malondialdehyde levels as a marker of lipid peroxidation in early childhood caries. *Eur J Dent.* 2018;12(1):67–70.
20. Jeevanandan G, Thomas E. Volumetric analysis of hand, reciprocating and rotary instrumentation techniques in primary molars using spiral computed tomography: An in vitro comparative study. *Eur J Dent.* 2018;12(1):21–6.
21. Ponnulakshmi R, Shyamaladevi B, Vijayalakshmi P, Selvaraj J. In silico and in vivo analysis to identify the antidiabetic activity of beta sitosterol in adipose tissue of high fat diet and sucrose induced type-2 diabetic experimental rats. *Toxicol Mech Methods.* 2019;29(4):276–90.
22. Sundaram R, Nandhakumar E, Haseena Banu H. Hesperidin, a citrus flavonoid ameliorates hyperglycemia by regulating key enzymes of carbohydrate metabolism in streptozotocin-induced diabetic rats. *Toxicol Mech Methods.* 2019;29(9):644–53.
23. Alsawalha M, Rao CV, Al-Subaie AM, Haque SKM, Veeraraghavan VP, Surapaneni KM. Novel mathematical modelling of Saudi Arabian natural diatomite clay. *Mater Res Express.* 2019;6(10):105531.
24. Yu J, Li M, Zhan D, Shi C, Fang L, Ban C, et al. Inhibitory effects of triterpenoid betulin on inflammatory mediators inducible nitric oxide synthase, cyclooxygenase-2, tumor necrosis factor- α , interleukin-6, and proliferating cell nuclear antigen in 1, 2-dimethylhydrazine-induced rat colon carcinogenesis. *Pharmacogn Mag.* 2020;16(72):836.
25. Shree KH, Hema Shree K, Ramani P, Herald Sherlin, Sukumaran G, Jeyaraj G, et al. Saliva as a Diagnostic Tool in Oral Squamous Cell Carcinoma – a Systematic Review with Meta Analysis [Internet]. *Pathology & Oncology Research.* 2019; 25: 447–53. Available:<http://dx.doi.org/10.1007/s12253-019-00588-2>
26. Zafar A, Sherlin HJ, Jayaraj G, Ramani P, Don KR, Santhanam A. Diagnostic utility of touch imprint cytology for intraoperative assessment of surgical margins and sentinel lymph nodes in oral squamous cell carcinoma patients using four different cytological stains. *Diagn Cytopathol.* 2020;48(2):101–10.
27. Karunakaran M, Murali P, Palaniappan V, Sivapathasundharam B. Expression and distribution pattern of podoplanin in oral submucous fibrosis with varying degrees of dysplasia – an immunohistochemical study [Internet]. *Journal of Histotechnology.* 2019;42:80–6. Available:<http://dx.doi.org/10.1080/01478885.2019.1594543>
28. Sarode SC, Gondivkar S, Gadbail A, Sarode GS, Yuwanati M. Oral submucous fibrosis and heterogeneity in outcome measures: a critical viewpoint. *Future Oncol.* 2021;17(17):2123–6.
29. Raj Preeth D, Saravanan S, Shairam M, Selvakumar N, Selestin Raja I, Dhanasekaran A, et al. Bioactive Zinc(II) complex incorporated PCL/gelatin electrospun nanofiber enhanced bone tissue regeneration. *Eur J Pharm Sci.* 2021;160:105768.
30. Prithiviraj N, Yang GE, Thangavelu L, Yan J. Anticancer Compounds From Starfish Regenerating Tissues and Their Antioxidant Properties on Human Oral Epidermoid Carcinoma KB Cells. In: pancreas. Lippincott williams & Wilkins two commerce sq, 2001 market st, Philadelphia. 2020;155–6.
31. Dicato M, Plawny L, Diederich M. Anemia in cancer. *Ann Oncol.* 2010;21Suppl 7:167–72.
32. Knight K, Wade S, Balducci L. Prevalence and outcomes of anemia in cancer: a systematic review of the literature [Internet]. *The American Journal of Medicine.* 2004;116:11–26. Available:<http://dx.doi.org/10.1016/j.amjmed.2003.12.008>
33. Anumolu VNSH, Srikanth A, Paidi K. Evaluation of the relation between anemia and periodontitis by estimation of blood parameters: A cross-sectional study. *J Indian Soc Periodontol.* 2016;20(3):265–72.
34. Auerbach AD. Fanconi anemia. *Dermatol Clin.* 1995;13(1):41–9.
35. Caro JJ, Salas M, Ward A, Goss G. Anemia as an independent prognostic factor for survival in patients with cancer: a systemic, quantitative review. *Cancer.* 2001;91(12):2214–21.
36. Caro JJ, Jaime Caro J, Salas M, Ward A, Goss G. Anemia as an independent prognostic factor for survival in patients

- with cancer [Internet]. *Cancer*. 2001; 91:2214–21.
Available: [http://dx.doi.org/10.1002/1097-0142\(20010615\)91:12<2214::aid-cnrcr1251>3.0.co;2-p](http://dx.doi.org/10.1002/1097-0142(20010615)91:12<2214::aid-cnrcr1251>3.0.co;2-p)
37. Tas F, Eralp Y, Basaran M, Sakar B, Alici S, Argon A, et al. Anemia in oncology practice: relation to diseases and their therapies. *Am J Clin Oncol*. 2002; 25(4):371–9.
38. Quirt I, Robeson C, Lau CY, Kovacs M, Burdette-Radoux S, Dolan S, et al. Epoetin Alfa Therapy Increases Hemoglobin Levels and Improves Quality of Life in Patients With Cancer-Related Anemia Who Are Not Receiving Chemotherapy and Patients With Anemia Who Are Receiving Chemotherapy [Internet]. *Journal of Clinical Oncology*. 2001; 19:4126–34.
Available: <http://dx.doi.org/10.1200/jco.2001.19.21.4126>
39. Bordoloi B, Tandon A, Jaiswal R, Srivastava A, Singh R, Shafique U. Demographic and clinicopathological profile of oral squamous cell carcinoma patients of North India: A retrospective institutional study [Internet]. *SRM Journal of Research in Dental Sciences*. 2018;9:114.
Available: http://dx.doi.org/10.4103/srmjrds.srmjrds_21_18
40. Haider RZAS. Hematological Presentation of Oral Squamous Cell Carcinoma Patients. *EC Dental Science*. 2019; 18(2):321–5.
41. Osterborg A, Brandberg Y. Relationship between changes in hemoglobin level and quality of life during chemotherapy in anemic cancer patients receiving epoetin alfa therapy. *Cancer*. 2003;97(12):3125–6.
42. Cella D. Factors influencing quality of life in cancer patients: anemia and fatigue. *Semin Oncol*. 1998;25(3 Suppl 7):43–6.
43. Brandberg Y. Relationship between anemia, fatigue, and quality of life in cancer patients [Internet]. *Recombinant Human Erythropoietin (rhEPO) in Clinical Oncology*. 2002;173–84.
Available: http://dx.doi.org/10.1007/978-3-7091-7658-0_9

© 2021 Desai et al.; This is an Open Access article distributed under the terms of the Creative Commons Attribution License (<http://creativecommons.org/licenses/by/4.0>), which permits unrestricted use, distribution, and reproduction in any medium, provided the original work is properly cited.

Peer-review history:

The peer review history for this paper can be accessed here:
<https://www.sdiarticle5.com/review-history/81801>